

**NOTES:**

- STANDARD TOOLS REQUIRED.

**TABLE 1. AFFECTED SEAT ASSEMBLIES**

SB number	Airline	Code	A/C	Model
3505	Air India	AIN	747	8001
3522	TransAero Airlines	TRX	A300	4004
3506	Alitalia	ALI	MD-11	8001
3504	Societe Air France	AFA	A310	7502
3500	American Airlines	AAL	757	4004
			767	6002
			777	6002
			DC-10	6002
			F100	4004
			MD-11	6002
			MD-80	5200
			757	4004
3507	Ansett-Australia	ANS	737	4004
3502	Aeroflot	ARO	A310	5150
			A310	7502
3501	Asiana Airlines	AAR	737	4004
			747	7502
			767	8001
			767	4004
3503	Air Canada	ACN	747	8001
3508	Civil Aviation of China	CAC	737	4004
3509	China Airlines Ltd.	CHI	MD-11	8001
3510	Carnival Airlines	CVL	A300	7501
3511	Delta Airlines	DAL	727	4004
			737	5150
			757	4004
			767	4004
			767	6000
			767	7502
			A310	5150
			A310	7502
			A310	8001
			MD-11	8001
3512	El Al Israel Airlines	ELAL	757	4001
3513	Garuda	GIA	A300	7501
			A300	7502
3514	GPA/AER Lingus	GPA	767	8000
3515	Ansett-Australia	HNA	737	4004
3516	Iberia Lineas Aereas	IBE	747	8001
3518	Korean Air Lines	KAL	MD-11	4004
3519	Mitsui/Air Europe	MIU	MD-11	7502
3520	Rio-Sul	ROS	737	4004
3521	Singapore Airlines	SIA	A310	8000
3517	Air Jamaica	JAM	A320	5150
3523	United Airlines	UAL	767	7502
3524	Varig Airlines	VAR	747	4004
			747	7502
			MD-11	8001
3525	VASP Airlines	VASP	MD-11	4004
3525	VASP Airlines	VASP	MD-11	7502

THIS DRAWING IS CONFIDENTIAL AND PROPRIETARY TO WEBER AIRCRAFT LLC. THE DESIGNS AND INFORMATION CONTAINED HEREIN ARE WEBER AIRCRAFT LLC'S PROPERTY AND MAY NOT BE REPRODUCED, PUBLISHED OR DISCLOSED WITHOUT THE PRIOR WRITTEN AUTHORIZATION OF WEBER AIRCRAFT LLC.

REVISIONS			
LT#	DESCRIPTION	DATE	APPROVED
B	SEE DCN	10/26/12	S.GAGE

THIS DOCUMENT CONTAINS INSTRUCTIONS REQUIRED TO INSPECT AND REPLACE TRACK FITTINGS IF APPLICABLE.

REFER TO COMPONENT MAINTENANCE MANUAL FOR INSTALLATION INSTRUCTIONS.

THE SEATS TO BE MODIFIED MUST BE INSPECTED FOR SERVICEABILITY PRIOR TO MODIFICATION.

IT IS RECOMMENDED THAT THE AFFECTED SEAT ASSY NOT BE DISASSEMBLED ANY FURTHER THAN ABSOLUTELY NECESSARY TO ACCOMPLISH THIS MODIFICATION.

SEAT INTEGRITY AFTER MODIFICATION MUST BE MEET OR EXCEED THE ORIGINAL CONDITION.

**ACCOMPLISHMENT INSTRUCTIONS**

**A. Procedure**

- Review seat models and part numbers in Section 1.A. Table 1 to determine if you still have applicable seats in service.
- Inspect applicable seats in service per the following criteria to determine serviceability:
  - Reference Figures 1 and 2 for an example of plungers engaged and not engaged. Reference Figure 3 for additional information to establish the plunger is fully engaged.
  - Proper installation may be validated by visual inspection to ensure a properly installed seat track fitting matches Figure 1. In addition, apply slight pressure with a slotted screwdriver to push down on the top of the plunger to ensure proper engagement. ANY vertical movement of the plunger while applying downward pressure on the plunger indicates a worn seat track fitting and the affected track fitting should be replaced.
  - In order to release, the shear plunger should require deliberate upward force with a tool such as a screwdriver.
  - When the seats are removed from the aircraft, the fitting assembly should be protected from handling damage. This damage can be prevented by installing protectors over the track fittings.
- Upon accomplishment of inspection procedures above, notify Zodiac Seats US LLC of your findings related to the inspection procedures identified above.
- Regardless of the inspection reports from Section A, Zodiac Seats strongly recommends that you revise your maintenance program for continued airworthiness using the following visual inspection to ensure no visible corrosion or mechanical damage to the fittings exists upon removal from the seat tracks:
  - If necessary, clean with soap and water.
  - Ability to separate the plunger from the track fitting without a mechanical tool (i.e. bare handed) deems fitting is unserviceable.
  - The plunger locking pin (as shown in Figure 4) should have a positive extension. If plunger locking pin is frozen or does not return to the extended position, the track fitting is deemed unserviceable.
  - When engaging the plunger, you should feel a positive "click". This ensures the locking pin is engaging. If this does not occur, the track fitting is deemed unserviceable.
  - Overtravel that allows for the pin (shown in Figure 4) to become dislodged from the fitting body when in the engaged (down) position, is unacceptable. Such fittings are deemed unserviceable.

THIRD ANGLE PROJECTION	UNLESS OTHERWISE SPECIFIED	PROJECT/ CONTRACT NO.	WEBER AIRCRAFT LLC GAINESVILLE, TEXAS
	DIMENSIONS ARE IN INCHES	DRAFTSMAN	C. COBBURN
	TOLERANCES ON	CHECKER	S.GAGE
	DECIMALS	MFG PLAN	T. ALEXANDER
	ANGLES	STRESS	10/24/12
	XX ±.06	PROCESS	10/24/12
	XX ±.03	PROJ ENG	10/24/12
	XXX ±.010	SCALE	X/X
	FINISH PER DCN CRITERIA F-100	SIZE	CAGE CODE DWG NO. 867330
	DFTG AND DIM PER ASME Y14.100	REV.	B
		SHEET	1 OF 2

DWG NO. 867330



WEBER AIRCRAFT LLC  
PASSENGER SEAT DIVISION  
GAINESVILLE, TEXAS  
WEBER PROPRIETARY CAGE CODE: 3K723

**DRAWING TITLE**  
**MOD KIT-TRACK**  
**FITTING**  
**INSPECTION**

SHEET  
1  
OF  
2

PRIORITY  
 MINOR  
 MAJOR

DRAWING NUMBER  
**867330**

SIZE  
**E**

NO. OF SHEETS  
**2**

PREV REV LETTER  
**A**

NEW REV LETTER  
**B**

**ENGINEERING CHANGE NOTICE**

AFFECTED ASSEMBLY	SEAT CLASS	TYPE OF CHANGE	MFG ACTION	Y	N	REASON FOR CHANGE - CHECK APPROPRIATE BOXES
<input checked="" type="checkbox"/> VARIOUS <input type="checkbox"/> NOT APPLICABLE <input type="checkbox"/> SEAT ASSEMBLY	<input checked="" type="checkbox"/> TOURIST <input type="checkbox"/> BUSINESS <input type="checkbox"/> FIRST <input type="checkbox"/> OTHER	<input type="checkbox"/> ENGR ORDER <input checked="" type="checkbox"/> DRAWING CHG NOTICE <input type="checkbox"/> DV	INVENTORY ASSY SCHEDULE SHOP ORDER TOOL FIXTURE COMPONENT PRT SHIPPED PARTS SURPLUS MTL			select one from each column that describes reasons I 1 <input type="checkbox"/> NEW PROGRAM 2 <input type="checkbox"/> ERROR 3 <input type="checkbox"/> IMPROVEMENT 4 <input checked="" type="checkbox"/> DRAWING UPDATE 5 <input type="checkbox"/> OTHER-EXPLAIN  II 1 <input checked="" type="checkbox"/> ENGINEERING 2 <input type="checkbox"/> CUSTOMER 3 <input type="checkbox"/> TOOLING 4 <input type="checkbox"/> MANUFACTURING 5 <input type="checkbox"/> VENDOR 6 <input type="checkbox"/> PURCHASING 7 <input type="checkbox"/> QUALITY ASSURANCE 8 <input type="checkbox"/> REGULATORY AGENCY 9 <input type="checkbox"/> OTHER-EXPLAIN  III 1 <input type="checkbox"/> HARDWARE 2 <input type="checkbox"/> DESIGN 3 <input type="checkbox"/> DIMENSIONS 4 <input checked="" type="checkbox"/> TYPOGRAPHICAL 5 <input type="checkbox"/> CLARIFICATION 6 <input type="checkbox"/> USE STD TOOLING 7 <input type="checkbox"/> PROCESS CHANGE 8 <input type="checkbox"/> CONFORM TO PARTS 9 <input type="checkbox"/> OTHER-EXPLAIN
PART NUMBER	PARTS DISPOSITION	LIST OF MATERIALS	CHANGE AFFECTS	Y	N	
ModelNo. Various	REWORK-EXPLAIN	FIELD OF DWG		X		
EFFECTIVITY	NOT APPLICABLE	DWG NOTES			X	
UPON RELEASE	NEW RELEASE	PURCH PARTS			X	
	NEW PART	FAB PARTS			X	
	USE AS IS	ASSEMBLIES			X	
		CYCLE/ABUSE TEST			X	
	PARTS CONFORM	EXPLANATION REVISED AFFECTED SEAT ASSEMBLIES TABLE PER FAA REQUIREMENT				
	SCRAP					
	<input checked="" type="checkbox"/> OTHER-EXPLAIN					

**DESCRIPTION OF CHANGE**  
ON F/D ZN/D6-F8 REVISED TABLE 1 IS:

TABLE 1. AFFECTED SEAT ASSEMBLIES

SB number	Airline	Code	A/C	Model
3505	Air India	AIN	747	8001
3522	Air Terrex	TRX	A300	4004
3506	Alitalia	ALI	MD-11	8001
3504	Societe Air France	AFA	A310	7502
3500	American Airlines	AAL	757	4004
			767	6002
			757	7502
			777	6002
			DC-10	6002
			F100	4004
			MD-11	6002
			MD-80	5200
3507	Ansett-Australia	ANS	737	4004
3502	Aeroflot	ARD	A310	5150
			A310	7502
3501	Asiana Airlines	AAR	737	4004
			747	7502
			767	4004
3503	Air Canada	ACN	747	8001
3508	Civil Aviation of China	CAC	737	4004
3509	China Airlines Ltd.	CHI	MD-11	8001
3510	Carnival Airlines	CVL	A300	7501
3511	Delta Airlines	DAL	727	4004
			737	5150
			757	4004
			767	4004
			767	6000
			757	7502
			A310	5150
A310	7502			
3512	El Al Israel Airlines	ELAL	757	4001
			7501	7501
			A300	7501
3513	Garuda	GIA	MD-11	7502
3514	GPA/AER Lingus	GPA	767	8000
3515	Ansett-Australia	HNA	737	4004
3516	Iberia Lineas Aereas	IBE	747	8001
3518	Korean Air Lines	KAL	MD-11	4004
3519	Mitsui/Air Europe	MIU	MD-11	7502
3520	Rio-Sul	ROS	737	4001
3521	Singapore Airlines	SIA	A310	8000
3517	Air Jamaica	JAM	A320	5150
3523	United Airlines	UAL	767	7502
3524	Varig Airlines	VAR	747	4004
			7502	8001
			7502	8001
			MD-11	8001
3525	VASP Airlines	VASP	MD-11	7502

WRITER BSN  
BARTON STARNES  
DATE 10/26/2012  
CHECKER STEVEN GAGE  
DATE 10/26/2012  
MFG ENGINEERING MARCO MOJICA  
DATE 10/26/2012  
STRESS \*ROBERT TRIMBLE  
DATE 10/26/2012  
MATL & PROCESS \*ROBERT TRIMBLE  
DATE 10/26/2012  
MFG PLANNING JOSHUA LOKKER  
DATE 10/26/2012  
ENGINEERING STEVEN GAGE  
DATE 10/26/2012  
DRAWING RELEASE RUSSELL THOMAS  
DATE 10/26/2012



WEBER AIRCRAFT LLC  
PASSENGER SEAT DIVISION  
GAINESVILLE, TEXAS  
WEBER PROPRIETARY CAGE CODE: 3K723

**DRAWING TITLE**  
**MOD KIT-TRACK**  
**FITTING**  
**INSPECTION**

**SHEET**  
2  
**OF**  
2

**PRIORITY**  
 MINOR  
 MAJOR

**DRAWING NUMBER**  
**867330**

**SIZE**  
**E**

**NO. OF SHEETS**  
**2**

**PREV REV LETTER**  
**A**

**NEW REV LETTER**  
**B**

**DESCRIPTION OF CHANGE**

WAS:

**TABLE 1. AFFECTED SEAT ASSEMBLIES**

3500	AAL	6200	835581	767	SEAT ASSY-6002, F/C 3GL 3LPR
3501	AAR	4004	841204	767	SEAT ASSY-STD HDOP DBL 4004 T/C
3502	ARO	5150	849016	A310	SEAT ASSY-STD DBL T/C 5150 ARO
3503	ACH	8001	841551	747	SEAT ASSY - 8001 F/C DBL 54
3504	AFA	7502	842812	A310	SEAT ASSY 7502 B/C DBL
3505	AJN	8001	844354	747	SEAT ASSY - AJN 747-400, 54*8001
3506	ALI	8001	841672	MD11	SEAT ASSY-ALI MD-11, 57 8001
3507	ANG	4004	841037	737	SEAT ASSY - 4004, T/C, TPL
3508	CAC	4004	847888	737	SEAT ASSY - 4004, T/C TPL
3509	CHI	8001	842354	MD11	SEAT ASSY - 8001, F/C 54"
3510	CVL	7501	845722	A300	SEAT ASSY - 7501, F/C, DBL
3511	DAL	6000	828577	767	SEAT ASSY-F/R DBL, F/C 767
3512	ELAL	4001	835583	757	SEAT ASSY - 4001, T/C TPL STD
3513	GIA	7501	841921	MD11	SEAT ASSY - 7501, F/C, DBL
3514	GPA	8000	841311	767	SEAT ASSY-EXEC. DBL
3515	HNA	4004	841037	737	SEAT ASSY - 4004, T/C, TPL
3516	IBE	8001	841381	747	SEAT ASSY - 57" 8001 IBE 747/200
3517	JAM	5150	848313	A320	SEAT ASSY-5150 TPL T/C JAM A320
3518	KAL	4004	841342	MD11	SEAT ASSY STD & F/R DBL T/C
3519	MIJ	4004	841222	MD11	SEAT ASSY-4004 T/C DBL STD
3520	ROB	4004	841038	737	SEAT ASSY STD DBL T/C 4004
3521	SIA	8000	841832	A310	SEAT ASSY-53", DBL, F/C, B/C, A-310
3522	TRX	4004	852463	A300	SEAT ASSY-STD, TPL 4004
3523	UAL	7502	840572	767	SEAT ASSY-3GL, B/C 7502
3524	VAR	7502	842497	747	SEAT ASSY, DBL STD B/C, 53
3525	VASP	4004	841222	MD11	SEAT ASSY-4004 T/C DBL STD



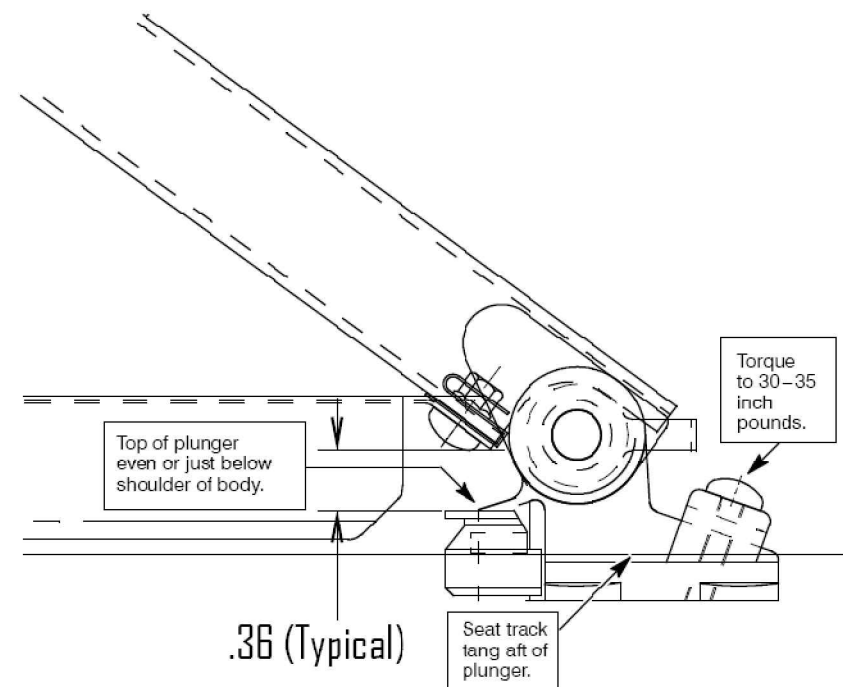
FIGURE 1 – Plunger Engaged



FIGURE 2 – Plunger Disengaged  
The figures depict part number 840620-403, 840620-401 is similar.

THIS DRAWING IS CONFIDENTIAL AND PROPRIETARY TO WEBER AIRCRAFT LLC.  
THE DESIGNS AND INFORMATION CONTAINED HEREIN ARE WEBER PROPRIETARY  
AND MAY NOT BE REPRODUCED, PUBLISHED OR DISCLOSED WITHOUT THE PRIOR  
WRITTEN AUTHORIZATION OF WEBER AIRCRAFT LLC

REVISIONS			
LTN	DESCRIPTION	DATE	APPROVED
B	SEE SHEET 1	XX-XX-XX	XXX



The figure depicts part number 840620-401, 840620-403 is similar.

FIGURE 3

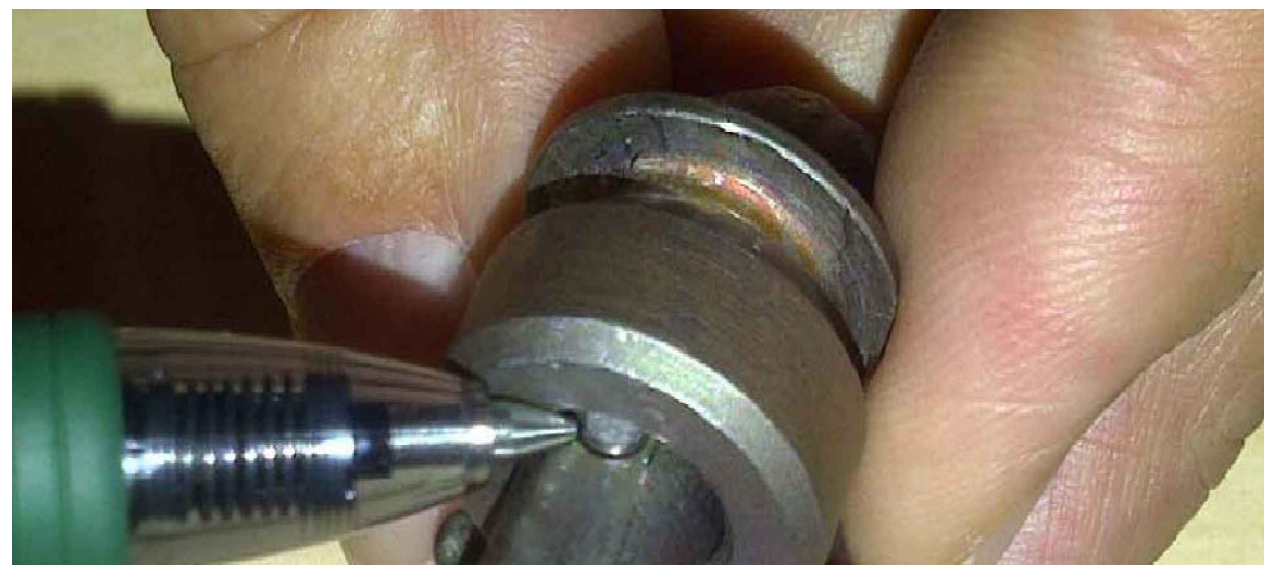


FIGURE 4

WEBER AIRCRAFT LLC GAINESVILLE, TEXAS			
THIRD ANGLE PROJECTION	SIZE E	CAGE CODE 3K723	DWG NO. 867330
			REV. B
			SHEET 2 OF 2

Drawings are controlled by Document Control  
check for latest revision thru office vision